

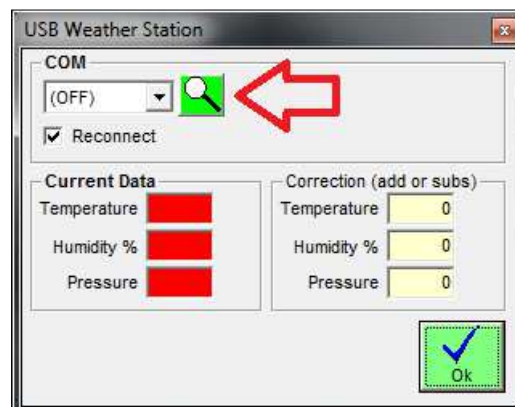


### Specs

- External USB Weather Station
- Dimensions: 64 mm (W) x 58 mm (L) x 23 (L) mm
- USB Connection, FTDI driver (the most common standard for Serial to USB converter)
- **Sensors:**
  - **Pressure.** Range: 300 to 1100 mbar, Accuracy: +/-1 mbar
  - **Humidity.** 0 to 100%. Accuracy: +/-3.5% RH
  - **Temperature.** Range: -40°C to 85°C. Accuracy: +/-1°C
- The Weather Station sends atmospheric conditions approximately once per second, and SportDyno Software stores them at the beginning of the test.

### Installation

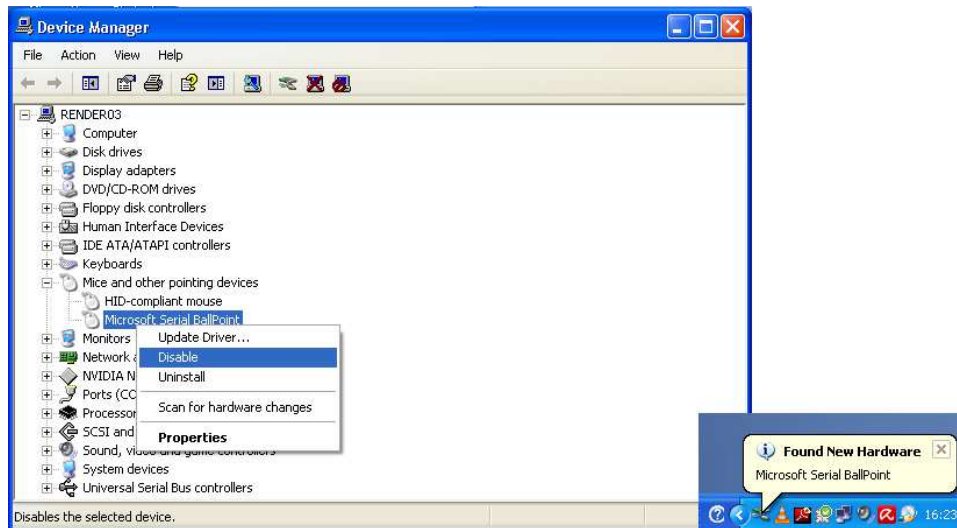
- install FTDI drivers: <http://www.ftdichip.com/FTDrivers.htm>
- connect to an USB port
- Open SportDyno and open Weather Station window at menu “Connection / Weather Station”, and click over the **search** icon. Note: from SW version SD 4.0.4 version has a direct FTDI connection, although in some cases FTDI port can cause some problems that COM will not have



**Known issues: Microsoft Ballpoint Device Issue**

Weather Station Ver 1.1 (previous version) sends data periodically at approximated rate of 1 packet per second. Eventually Windows may decide that this data correspond to a special type of mouse called “Ballpoint Device”, this means that the COM will be already open when Sportdyno tries to communicate with the weather station, and **communication will not be possible**. This happens even more on latest Windows versions (8 and 10).

The traditional way to avoid this issue consisted of: going to the Device Manager and **DISABLING** (not uninstalling) the Ballpoint Device. But even with it disabled, rarely, Windows could determine that it needs to be enabled again.



Newer Weather Stations (versions 2.1 and 1.2) include a jumper (pins 9 and 10 for V1.2, and 'AUTO' for V2.1). **If the jumper is OFF (default), the Weather Station will NOT send any data**, so Windows does not assign the “Ballpoint” to this COM, and only when Sportdyno connects to the WS, it will ask for the data. In this way Windows no longer installs the Ballpoint Device.

This new protocol (AUTO = OFF) is only valid for the following SportDyno versions:

- Version **3.8.41** and later (for 3.8 series)
- Version **4.0.1.43** and later (for 4.0 series)

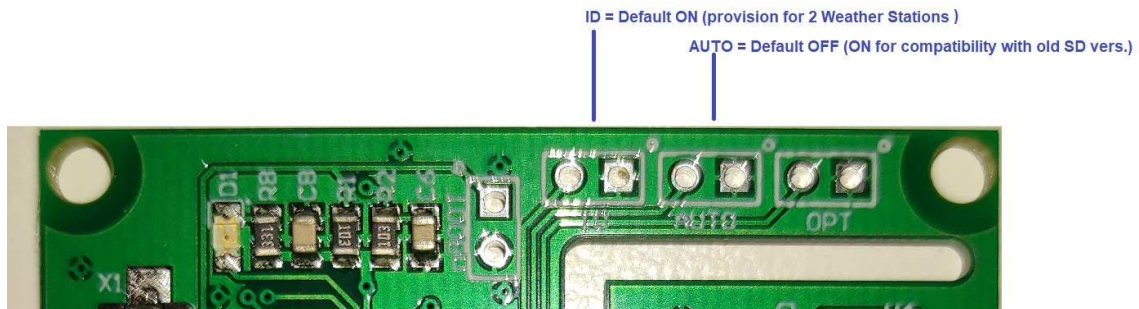
**For older SportDyno versions is necessary to set AUTO = ON** (V1.2: between pins 9 and 10, or V2.1: jumper 'AUTO') so the Weather Station works same as in ver 1.1 (continuous data)

**Version 2.1 (2018 and later)**

Version 2.1 is basically a technological update due to obsolescences in old parts. It includes a 32 bit MCU and a new Bosch sensor.

**AUTO: default = OFF** (will not send the data automatically)

**ID:** it provides a setting for a potential 2-WS system in future, but the SW does not support it at the moment.

**Version 1.2 (2018 and older)**

**Pins 9 and 10: default = OFF** (will not send the data automatically)

